

The Queen

Dick Griffin

ABA

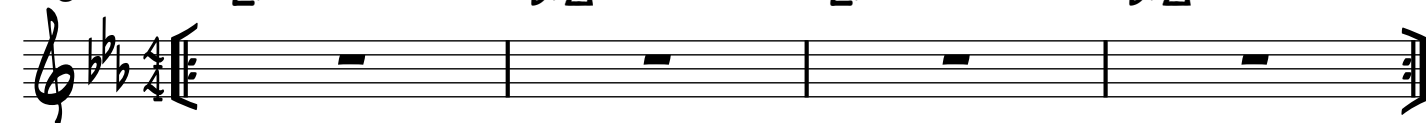
$\text{♩} = 60$

E^b

$\text{D}^b\Delta^7$

E^b

$\text{D}^b\Delta^7$



A

$\text{E}^b\Delta^7$

$\text{D}^b\Delta^7$

$\text{E}^b\Delta^7$

$\text{D}^b\Delta^7$



$\text{E}^b\Delta^7$

$\text{D}^b\Delta^7$

$\text{E}^b\Delta^7$

$\text{C}-7$



$\text{G}-7$

$\text{A}^b\Delta$

$\text{G}-7$

$\text{A}^b\Delta^7$



$\text{F}-7$

B^b

$\text{F}-7$

B^b

$\text{E}^b\Delta^7 \text{D}^b\Delta^7$

$\text{E}^b\Delta^7 \text{D}^b\Delta^7$ Fine



B

$\text{E}^b\Delta^7$

$\text{F}-7$

$\text{G}-7$

$\text{A}^b-7 \text{D}^b7$

$\text{G}^b\Delta^7 \text{E}$

$\text{G}^b\Delta^7 \text{E}$



G^b

A^b-7

B^b-7

$\text{B}-7 \text{E}^7$

$\text{A}\Delta^7 \text{G}\Delta^9$

$\text{A}\Delta^7 \text{G}\Delta^9$



$\text{A}\Delta^7$

$\text{B}-7$

D^b-7

$\text{D}-7 \text{G}^7$

$\text{C}\Delta^7 \text{B}^b\Delta^7$

$\text{C}\Delta^9 \text{B}^b\Delta^9$



$\text{C}\Delta^7$

$\text{D}-7$

$\text{E}-7$

B^b7

E^b

$\text{D}^b\Delta^7$

$\text{E}^b\Delta^7$

$\text{D}^b\Delta^7$

D.S. al Fine

